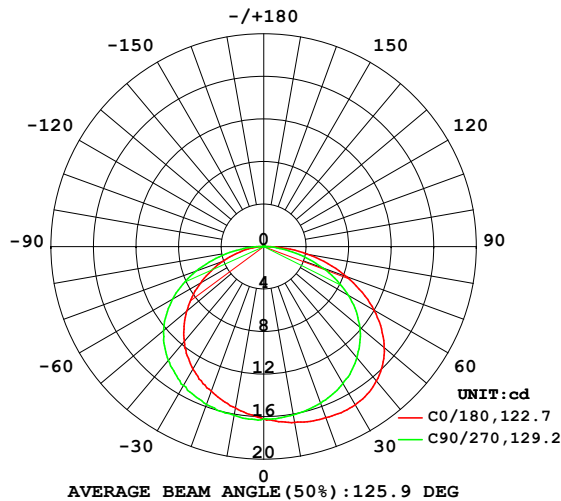


LUMINAIRE PHOTOMETRIC TEST REPORT

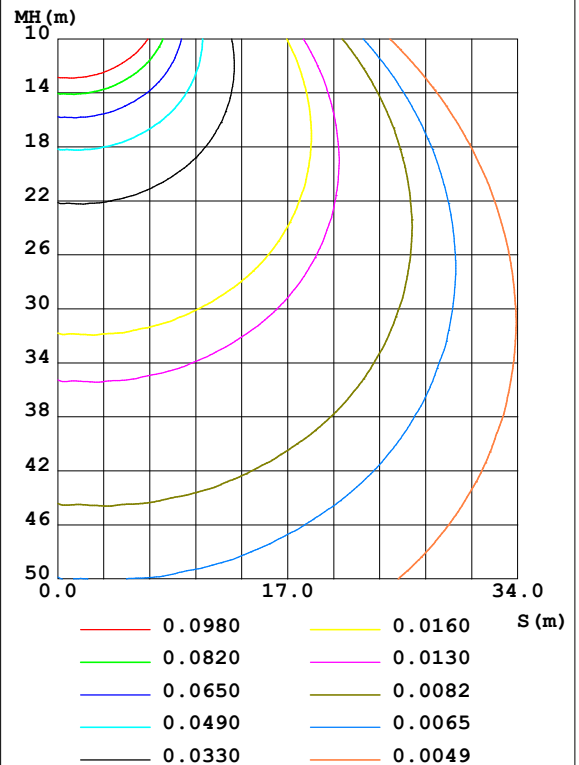
Test:U:12.001V I:0.3247A P:3.8967W PF:1.0000 Freq:0Hz Lamp Flux:57.2166x1 lm		
NAME: 03 RGBW B	TYPE:	WEIGHT:
SPEC.:	DIM.:	SERIAL No.:
MFR.:	SUR.: 0.02*1	Shielding Angle:

DATA OF LAMP		PHOTOMETRIC DATA Eff: 14.68 lm/W			
MODEL		I <sub>max</sub> (cd)	17.23	S/MH(C0/180)	1.23
NOMINAL POWER(W)		LOR(%)	100.0	S/MH(C90/270)	1.39
RATED VOLTAGE(V)		TOTAL FLUX(lm)	57.217	η UP,DN(C0-180)	0.3,49.8
NOMINAL FLUX(lm)	57.2166	CIE CLASS	DIRECT	η UP,DN(C180-360)	0.4,49.6
LAMPS INSIDE	1	η up(%)	0.6	CIBSE SHR NOM	1.50
TEST VOLTAGE(V)		η down(%)	99.4	CIBSE SHR MAX	1.55

LUMINOUS INTENSITY DISTRIBUTION DIAGRAM



C0 PLANE ISOLUX DIAGRAM (UNIT:lx)



C Range: 0 - 360DEG  
C Interval: 22.5DEG  
Test Speed: HIGH  
Temperature:25.3DEG  
Operators:JINZHI  
Test Date:2021-06-29

γ Range: 0 - 180DEG  
γ Interval: 1.0DEG  
Test System:EVERFINE GO-2000A\_V1 SYSTEM V2.00.446  
Humidity:65.0%  
Test Distance:9.660m [K=1.0000]  
Remarks:

## ZONAL FLUX DIAGRAM

## ZONAL FLUX DIAGRAM:

$\gamma$	C0	C45	C90	C135	C180	C225	C270	C315	$\gamma$	$\Phi$ zone	$\Phi$ total	%lum, lamp
10	16.77	16.56	16.08	15.56	15.40	15.63	16.10	16.66	0- 10	1.542	1.542	2.7,2.7
20	17.12	16.60	15.66	14.77	14.46	14.85	15.78	16.68	10- 20	4.514	6.056	10.6,10.6
30	17.20	16.53	14.89	13.71	13.32	13.83	15.10	16.43	20- 30	7.150	13.21	23.1,23.1
40	16.48	15.71	13.63	12.30	11.64	12.42	13.96	15.75	30- 40	9.156	22.36	39.1,39.1
50	14.80	14.08	11.79	10.31	9.463	10.50	12.32	14.39	40- 50	10.17	32.53	56.9,56.9
60	11.98	11.48	9.223	7.705	6.876	8.009	9.915	12.01	50- 60	9.827	42.36	74,74
70	8.299	7.789	5.927	4.649	4.182	5.076	6.785	8.499	60- 70	7.969	50.33	88,88
80	4.190	3.593	2.449	1.758	1.687	2.111	3.262	4.384	70- 80	4.898	55.23	96.5,96.5
90	0.3079	0.3816	0.2437	0.1982	0.1209	0.2581	0.4692	0.7085	80- 90	1.630	56.86	99.4,99.4
100	0.0304	0.0612	0.0608	0.0605	0.0457	0.0608	0.0456	0.0303	90-100	0.1232	56.98	99.6,99.6
110	0.0304	0.0456	0.0456	0	0.0457	0.0608	0.0608	0.0303	100-110	0.0473	57.03	99.7,99.7
120	0.0304	0.0456	0.0456	0	0.0457	0.0608	0.0608	0.0303	110-120	0.0442	57.07	99.7,99.7
130	0.0304	0.0456	0.0456	0.0151	0.0457	0.0608	0.0608	0.0303	120-130	0.0403	57.11	99.8,99.8
140	0.0304	0.0456	0.0456	0.0151	0.0457	0.0608	0.0608	0.0303	130-140	0.0353	57.15	99.9,99.9
150	0.0612	0.0456	0.0456	0.0151	0.0457	0.0608	0.0608	0.0303	140-150	0.0293	57.18	99.9,99.9
160	0.0609	0.0456	0.0456	0.0151	0.0457	0.0608	0.0608	0.0303	150-160	0.0220	57.20	100,100
170	0.0609	0.0456	0.0456	0.0151	0.0457	0.0608	0.0608	0.0303	160-170	0.0135	57.21	100,100
180	0.0609	0.0456	0.0456	0.0151	0.0457	0.0608	0.0608	0.0303	170-180	0.0045	57.22	100,100
DEG	LUMINOUS INTENSITY:cd									UNIT:lm		

Conical surface Flux(90deg): 27.398 lm

%lum = 47.9%

%lamp = 47.9%

Conical surface Flux(120deg): 42.36 lm

%lum = 74.0%

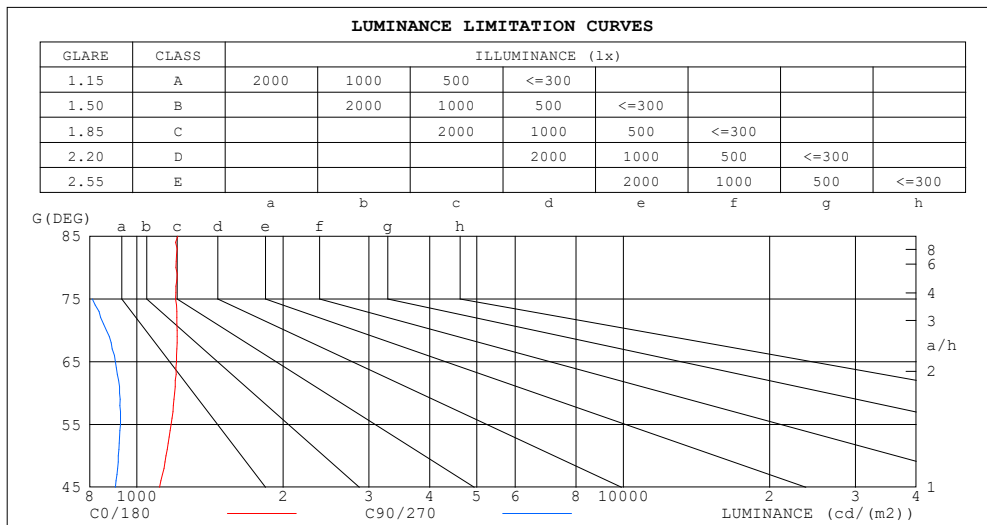
%lamp = 74.0%

C Range: 0 - 360DEG  
 C Interval: 22.5DEG  
 Test Speed: HIGH  
 Temperature:25.3DEG  
 Operators:JINZHI  
 Test Date:2021-06-29

$\gamma$  Range: 0 - 180DEG  
 $\gamma$  Interval: 1.0DEG  
 Test System:EVERFINE GO-2000A\_V1 SYSTEM V2.00.446  
 Humidity:65.0%  
 Test Distance:9.660m [K=1.0000]  
 Remarks:

## LUMINANCE LIMITATION CURVES

Test:U:12.001V I:0.3247A P:3.8967W PF:1.0000 Freq:0Hz Lamp Flux:57.2166x1 lm		
NAME: 03 RGBW B	TYPE:	WEIGHT:
SPEC.:	DIM.:	SERIAL No.:
MFR.:	SUR.: 0.02*1	Shielding Angle:



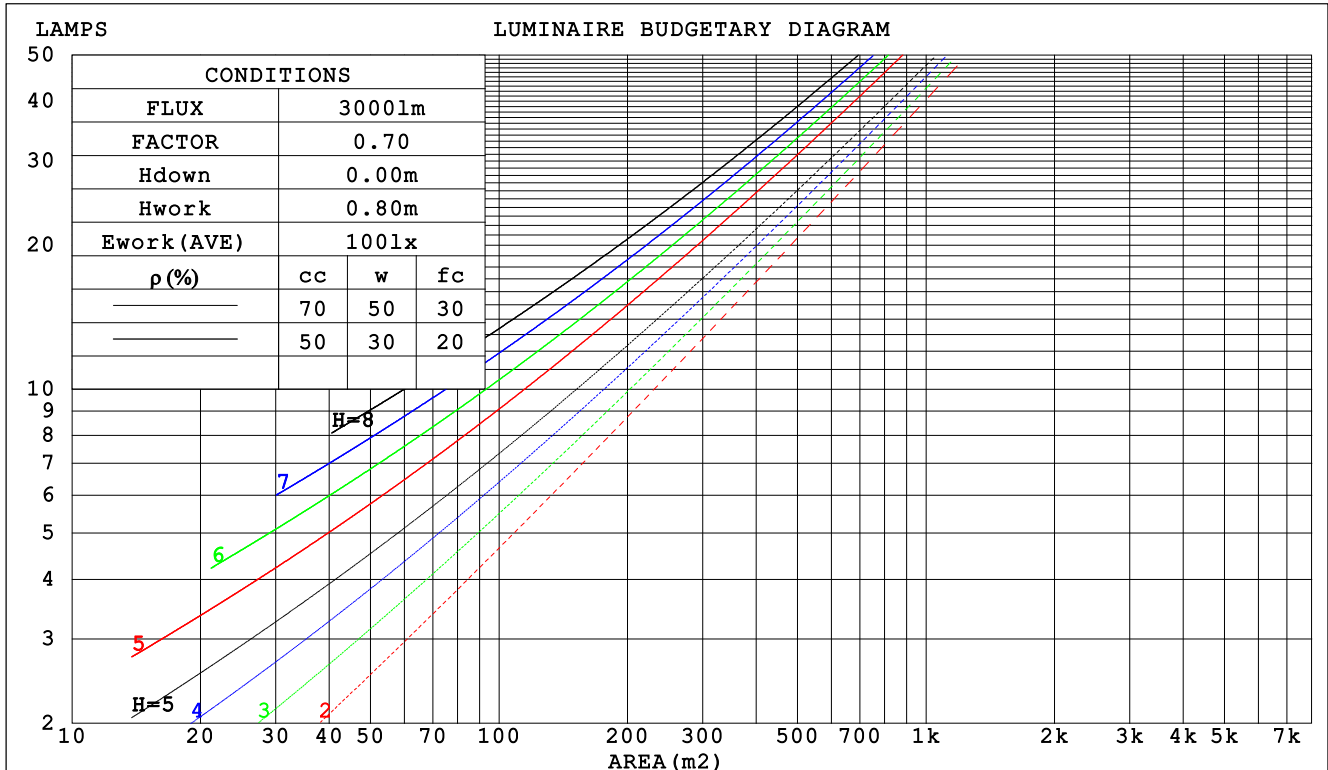
C Range: 0 - 360DEG  
C Interval: 22.5DEG  
Test Speed: HIGH  
Temperature: 25.3DEG  
Operators: JINZHI  
Test Date: 2021-06-29

$\gamma$  Range: 0 - 180DEG  
 $\gamma$  Interval: 1.0DEG  
Test System: EVERFINE GO-2000A\_V1 SYSTEM V2.00.446  
Humidity: 65.0%  
Test Distance: 9.660m [K=1.0000]  
Remarks:

CU AND LUMINAIRE BUDGETARY ESTIMATE DIAGRAM

Test:U:12.001V I:0.3247A P:3.8967W PF:1.0000 Freq:0Hz		
Lamp Flux:57.2166x1 lm		
NAME: 03 RGBW B	TYPE:	WEIGHT:
SPEC.:	DIM.:	SERIAL No.:
MFR.:	SUR.: 0.02*1	Shielding Angle:

pcc	80%			70%			50%			30%			10%			0
p <sub>w</sub>	50%	30%	10%	50%	30%	10%	50%	30%	10%	50%	30%	10%	50%	30%	10%	0
p <sub>fc</sub>	20%			20%			20%			20%			20%			0
RCR	RCR:Room Cavity Ratio															



C Range: 0 - 360DEG  
 C Interval: 22.5DEG  
 Test Speed: HIGH  
 Temperature:25.3DEG  
 Operators:JINZHI  
 Test Date:2021-06-29

γ Range: 0 - 180DEG  
 γ Interval: 1.0DEG  
 Test System:EVERFINE GO-2000A\_V1 SYSTEM V2.00.446  
 Humidity:65.0%  
 Test Distance:9.660m [K=1.0000]  
 Remarks:

### WEC AND CCEC

Test:U:12.001V I:0.3247A P:3.8967W PF:1.0000 Freq:0Hz		
Lamp Flux:57.2166x1 lm		
NAME: 03 RGBW B	TYPE:	WEIGHT:
SPEC.:	DIM.:	SERIAL No.:
MFR.:	SUR.: 0.02*1	Shielding Angle:

pcc	80%			70%			50%			30%			10%			0	
pw	50%	30%	10%	50%	30%	10%	50%	30%	10%	50%	30%	10%	50%	30%	10%	0	
pfc	20%			20%			20%			20%			20%			0	
RCR	RCR:Room Cavity Ratio						Wall Exitance Coefficients (WEC)										
0.0																	
1.0	.335	.191	.060	.328	.187	.059	.314	.180	.058	.302	.174	.056	.290	.168	.054		
2.0	.311	.170	.052	.305	.168	.052	.292	.163	.050	.281	.158	.049	.271	.153	.048		
3.0	.285	.152	.045	.280	.150	.045	.269	.146	.044	.259	.142	.043	.249	.138	.043		
4.0	.262	.136	.040	.256	.134	.040	.247	.131	.039	.238	.128	.039	.230	.125	.038		
5.0	.241	.123	.036	.236	.121	.035	.227	.118	.035	.219	.116	.034	.212	.113	.034		
6.0	.222	.111	.032	.218	.110	.032	.210	.108	.031	.203	.106	.031	.197	.103	.031		
7.0	.206	.102	.029	.202	.101	.029	.195	.099	.028	.189	.097	.028	.183	.095	.028		
8.0	.192	.094	.026	.189	.093	.026	.182	.091	.026	.177	.089	.026	.171	.088	.026		
9.0	.179	.087	.024	.176	.086	.024	.171	.084	.024	.166	.083	.024	.161	.082	.024		
10.0	.168	.081	.022	.166	.080	.022	.161	.079	.022	.156	.077	.022	.151	.076	.022		

pcc	80%			70%			50%			30%			10%			0
pw	50%	30%	10%	50%	30%	10%	50%	30%	10%	50%	30%	10%	50%	30%	10%	0
pfc	20%			20%			20%			20%			20%			0
RCR	RCR:Room Cavity Ratio						Ceiling Cavity Exitance Coefficients(CCEC)									
0.0	.195	.195	.195	.167	.167	.167	.114	.114	.114	.065	.065	.065	.021	.021	.021	
1.0	.187	.161	.137	.160	.138	.118	.109	.095	.082	.063	.055	.047	.020	.018	.015	
2.0	.180	.137	.101	.154	.118	.087	.105	.081	.061	.061	.047	.036	.020	.015	.012	
3.0	.172	.119	.077	.148	.103	.067	.101	.071	.047	.059	.042	.028	.019	.014	.009	
4.0	.165	.106	.061	.141	.092	.053	.097	.064	.038	.056	.037	.022	.018	.012	.007	
5.0	.157	.096	.051	.135	.083	.044	.093	.058	.031	.054	.034	.018	.017	.011	.006	
6.0	.150	.088	.043	.129	.076	.037	.089	.053	.026	.052	.031	.016	.017	.010	.005	
7.0	.143	.081	.037	.123	.070	.032	.085	.049	.023	.049	.029	.014	.016	.009	.005	
8.0	.136	.075	.033	.117	.065	.029	.081	.046	.020	.047	.027	.012	.015	.009	.004	
9.0	.130	.070	.030	.112	.061	.026	.078	.043	.018	.045	.025	.011	.015	.008	.004	
10.0	.124	.066	.027	.107	.057	.023	.074	.040	.017	.043	.024	.010	.014	.008	.003	

C Range: 0 - 360DEG  
C Interval: 22.5DEG  
Test Speed: HIGH  
Temperature:25.3DEG  
Operators:JINZHI  
Test Date:2021-06-29

γ Range: 0 - 180DEG  
γ Interval: 1.0DEG  
Test System:EVERFINE GO-2000A\_V1 SYSTEM V2.00.446  
Humidity:65.0%  
Test Distance:9.660m [K=1.0000]  
Remarks:

### UGR(Unified Glare Rating) Table

Test:U:12.001V I:0.3247A P:3.8967W PF:1.0000 Freq:0Hz										
Lamp Flux:57.2166x1 lm										
NAME: 03 RGBW B					TYPE:			WEIGHT:		
SPEC.:					DIM.:			SERIAL No.:		
MFR.:					SUR.: 0.02*1			Shielding Angle:		
ceiling/cavity	0.7	0.7	0.5	0.5	0.3	0.7	0.7	0.5	0.5	0.3
walls	0.5	0.3	0.5	0.3	0.3	0.5	0.3	0.5	0.3	0.3
working plane	0.2	0.2	0.2	0.2	0.2	0.2	0.2	0.2	0.2	0.2
Room dimensions	Viewed crosswise					Viewed endwise				
x = 2H y = 2H	24.2	25.8	24.5	26.0	26.2	23.1	24.7	23.4	24.9	25.2
3H	26.1	27.6	26.4	27.8	28.1	24.7	26.2	25.1	26.5	26.7
4H	26.9	28.3	27.2	28.6	28.9	25.4	26.8	25.7	27.0	27.3
6H	27.6	28.9	27.9	29.2	29.5	25.8	27.1	26.1	27.4	27.7
8H	27.8	29.1	28.2	29.4	29.7	25.9	27.2	26.3	27.5	27.8
12H	28.0	29.3	28.4	29.6	29.9	26.0	27.2	26.3	27.5	27.8
4H 2H	24.8	26.2	25.2	26.5	26.8	24.1	25.5	24.4	25.7	26.0
3H	26.9	28.2	27.3	28.5	28.8	25.8	27.1	26.2	27.4	27.7
4H	27.9	29.0	28.3	29.4	29.7	26.6	27.7	27.0	28.1	28.4
6H	28.7	29.7	29.1	30.1	30.5	27.1	28.1	27.5	28.5	28.9
8H	29.0	30.0	29.4	30.3	30.7	27.3	28.2	27.7	28.6	29.0
12H	29.3	30.1	29.7	30.5	31.0	27.4	28.3	27.8	28.7	29.1
8H 4H	28.2	29.1	28.6	29.5	29.9	27.1	28.0	27.5	28.4	28.8
6H	29.2	29.9	29.6	30.4	30.8	27.8	28.6	28.2	29.0	29.4
8H	29.6	30.3	30.1	30.7	31.2	28.0	28.7	28.5	29.2	29.6
12H	29.9	30.5	30.4	31.0	31.5	28.2	28.8	28.7	29.2	29.7
12H 4H	28.2	29.1	28.6	29.5	29.9	27.1	28.0	27.6	28.4	28.8
6H	29.2	29.9	29.7	30.4	30.8	27.9	28.6	28.4	29.0	29.5
8H	29.7	30.3	30.2	30.8	31.2	28.2	28.8	28.7	29.3	29.8
Variations with the observer position at spacings(CIE Pub.117):										
S = 1.0H	+ 0.1 / - 0.1					+ 0.1 / - 0.2				
1.5H	+ 0.2 / - 0.3					+ 0.2 / - 0.4				
2.0H	+ 0.2 / - 0.4					+ 0.2 / - 0.6				

CIE Pub.117, 57.22 lm Total Lamp Luminous Flux Correct (8log(F/F0) = -9.9)  
Area: 0.02 m2

C Range: 0 - 360DEG  
C Interval: 22.5DEG  
Test Speed: HIGH  
Temperature:25.3DEG  
Operators:JINZHI  
Test Date:2021-06-29

γ Range: 0 - 180DEG  
γ Interval: 1.0DEG  
Test System:EVERFINE GO-2000A\_V1 SYSTEM V2.00.446  
Humidity:65.0%  
Test Distance:9.660m [K=1.0000]  
Remarks:

### UTILIZATION FACTORS TABLE

Test:U:12.001V I:0.3247A P:3.8967W PF:1.0000 Freq:0Hz Lamp Flux:57.2166x1 lm		
NAME: 03 RGBW B	TYPE:	WEIGHT:
SPEC.:	DIM.:	SERIAL No.:
MFR.:	SUR.: 0.02*1	Shielding Angle:

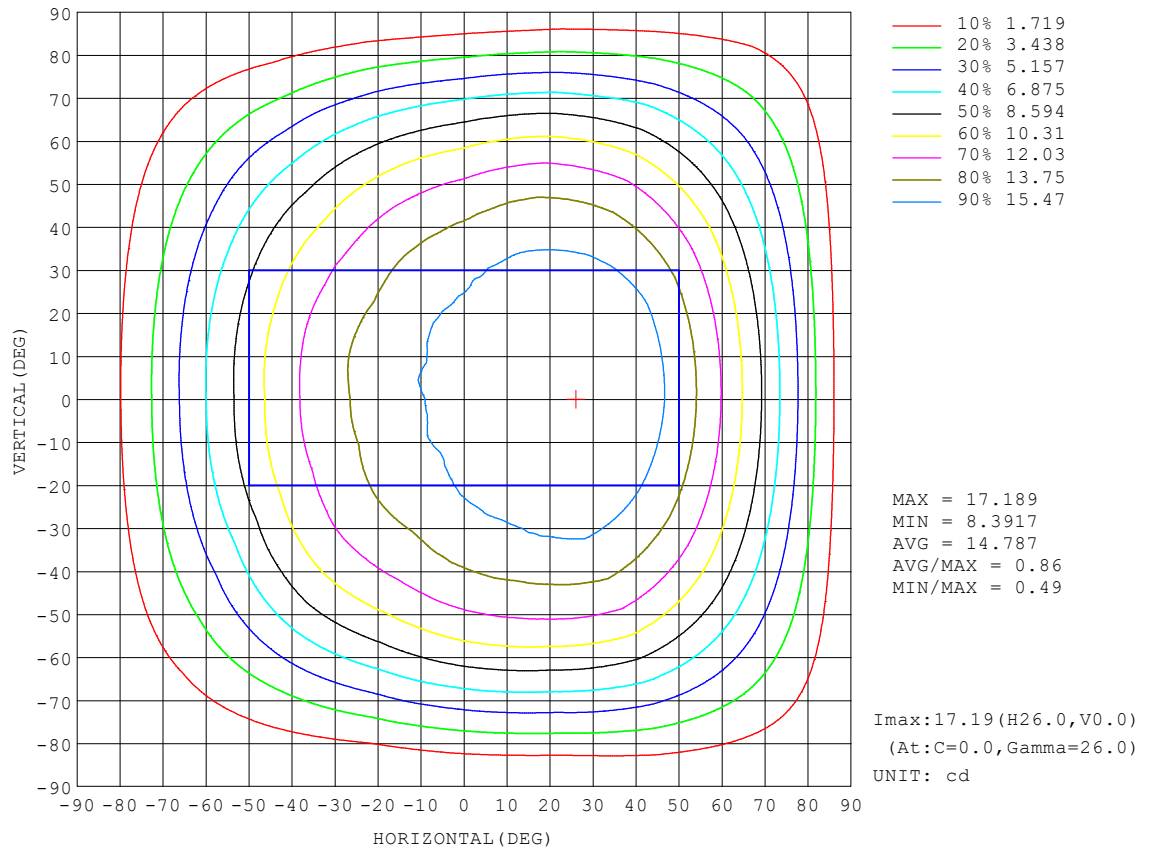
REFLECTANCE										
Ceiling	0.8	0.8	0.8	0.7	0.7	0.7	0.5	0.5	0.5	0
Walls	0.7	0.5	0.3	0.7	0.5	0.3	0.7	0.5	0.3	0
Working plane	0.2	0.2	0.2	0.2	0.2	0.2	0.2	0.2	0.2	0
ROOM INDEX	UTILIZATION FACTORS (PERCENT) $k(RI) \times RCR = 5$									
$k = 0.60$	54	42	35	54	42	35	52	41	35	28
0.80	64	52	44	63	52	44	61	51	44	36
1.00	73	61	53	72	60	53	69	62	52	45
1.25	80	69	61	79	68	61	76	67	60	52
1.50	85	75	67	84	74	67	80	72	66	58
2.00	93	83	76	91	82	76	87	80	74	66
2.50	97	88	82	95	87	81	91	84	79	70
3.00	100	93	87	98	91	86	94	88	84	75
4.00	105	99	93	102	97	92	98	93	89	80
5.00	107	102	98	105	100	96	100	96	93	83
ROOM INDEX	UF (total)									Direct
According to DIN EN 13032-2 2004			Suspended					SHRNOM = 1.25		

C Range: 0 - 360DEG  
C Interval: 22.5DEG  
Test Speed: HIGH  
Temperature:25.3DEG  
Operators:JINZHI  
Test Date:2021-06-29

$\gamma$  Range: 0 - 180DEG  
 $\gamma$  Interval: 1.0DEG  
Test System:EVERFINE GO-2000A\_V1 SYSTEM V2.00.446  
Humidity:65.0%  
Test Distance:9.660m [K=1.0000]  
Remarks:

ISOCANDELA DIAGRAM

Test:U:12.001V I:0.3247A P:3.8967W PF:1.0000 Freq:0Hz Lamp Flux:57.2166x1 lm		
NAME: 03 RGBW B	TYPE:	WEIGHT:
SPEC.:	DIM.:	SERIAL No.:
MFR.:	SUR.: 0.02*1	Shielding Angle:



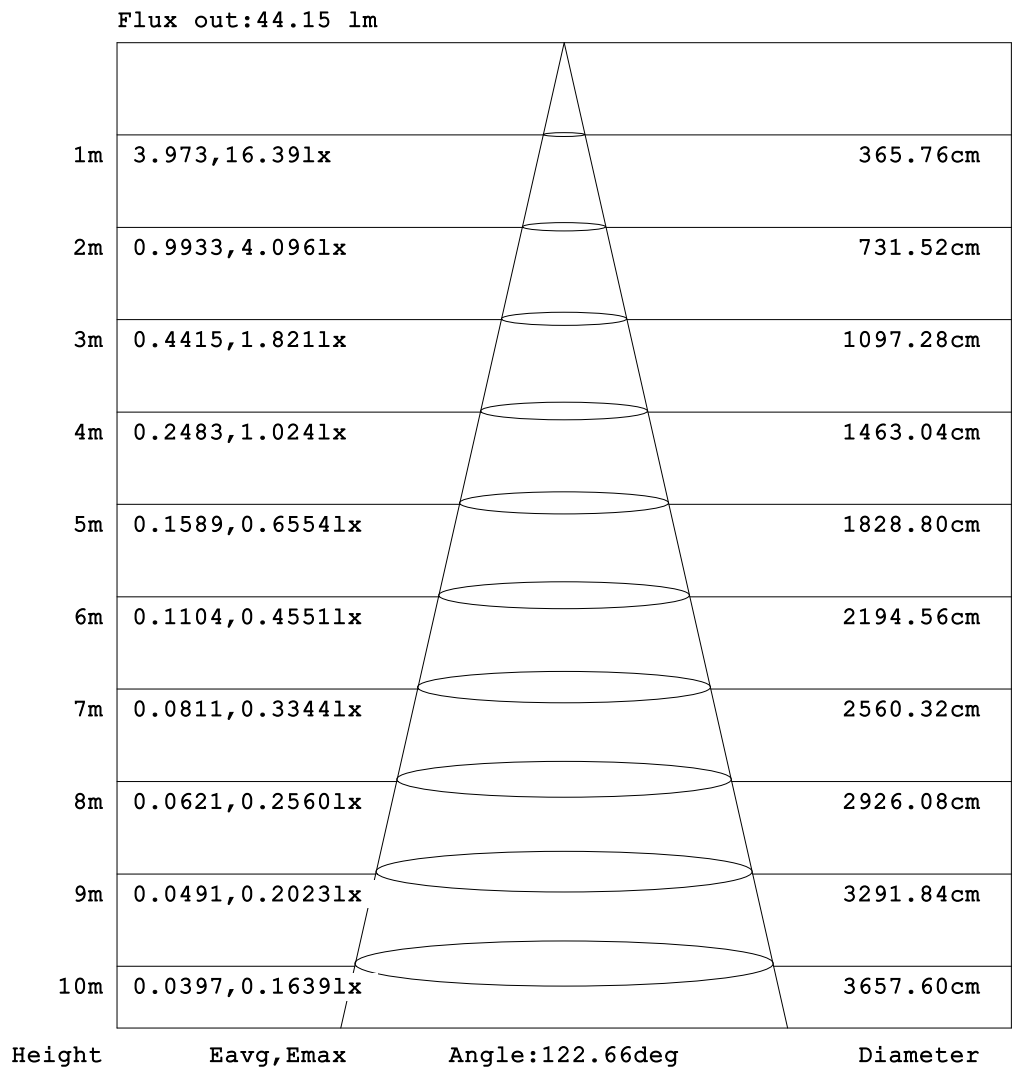
C Range: 0 - 360DEG  
C Interval: 22.5DEG  
Test Speed: HIGH  
Temperature:25.3DEG  
Operators:JINZHI  
Test Date:2021-06-29

$\gamma$  Range: 0 - 180DEG  
 $\gamma$  Interval: 1.0DEG  
Test System:EVERFINE GO-2000A\_V1 SYSTEM V2.00.446  
Humidity:65.0%  
Test Distance:9.660m [K=1.0000]  
Remarks:



AAI Figure

Test:U:12.001V I:0.3247A P:3.8967W PF:1.0000 Freq:0Hz Lamp Flux:57.2166x1 lm		
NAME: 03 RGBW B	TYPE:	WEIGHT:
SPEC.:	DIM.:	SERIAL No.:
MFR.:	SUR.: 0.02*1	Shielding Angle:



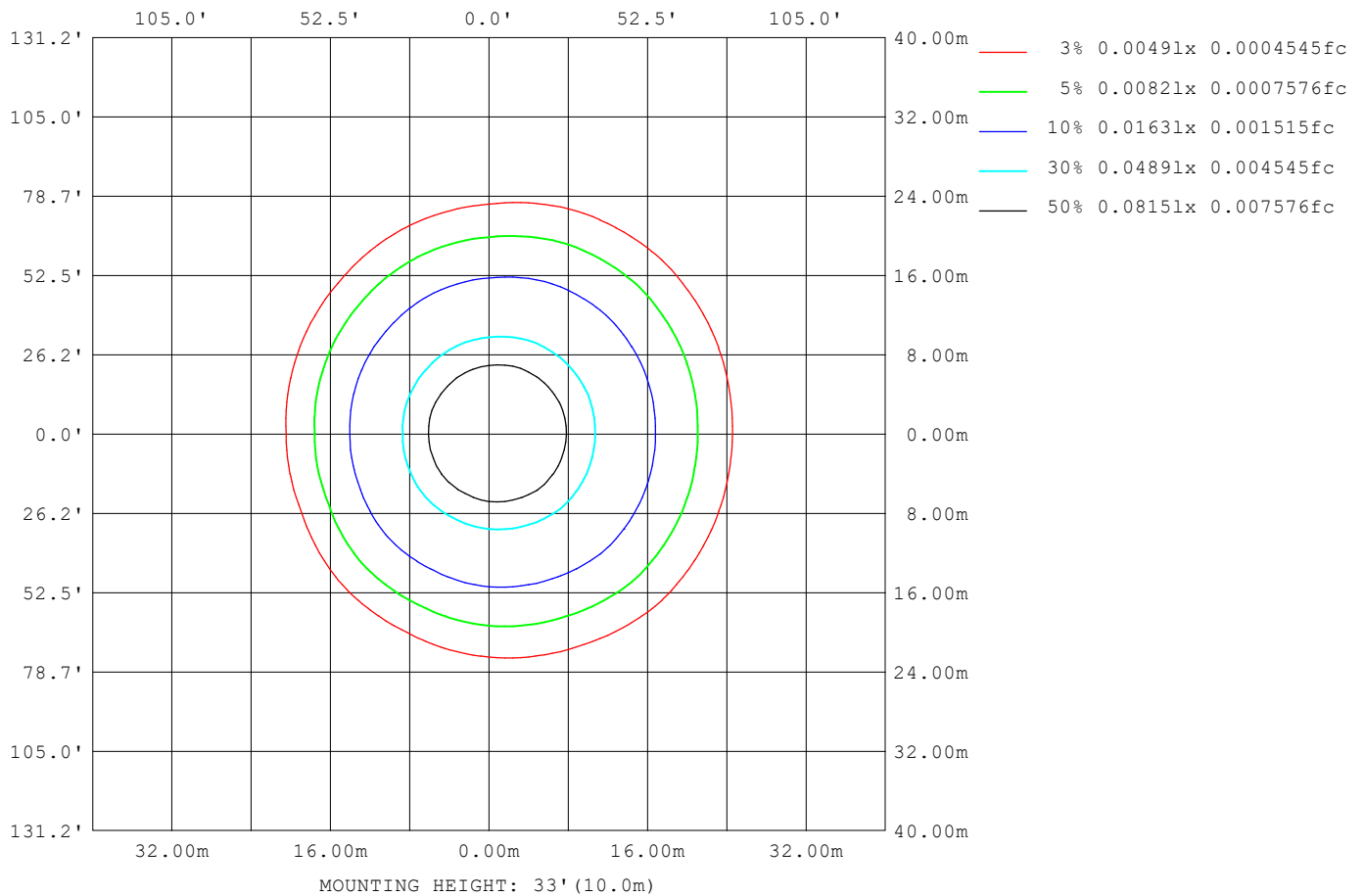
Note:The Curves indicate the illuminated area and the average illumination when the luminaire is at different distance.

C Range: 0 - 360DEG  
C Interval: 22.5DEG  
Test Speed: HIGH  
Temperature:25.3DEG  
Operators:JINZHI  
Test Date:2021-06-29

γ Range: 0 - 180DEG  
γ Interval: 1.0DEG  
Test System:EVERFINE GO-2000A\_V1 SYSTEM V2.00.446  
Humidity:65.0%  
Test Distance:9.660m [K=1.0000]  
Remarks:

ISOLUX DIAGRAM

Test:U:12.001V I:0.3247A P:3.8967W PF:1.0000 Freq:0Hz Lamp Flux:57.2166x1 lm		
NAME: 03 RGBW B	TYPE:	WEIGHT:
SPEC.:	DIM.:	SERIAL No.:
MFR.:	SUR.: 0.02*1	Shielding Angle:



C Range: 0 - 360DEG  
C Interval: 22.5DEG  
Test Speed: HIGH  
Temperature:25.3DEG  
Operators:JINZHI  
Test Date:2021-06-29

γ Range: 0 - 180DEG  
γ Interval: 1.0DEG  
Test System:EVERFINE GO-2000A\_V1 SYSTEM V2.00.446  
Humidity:65.0%  
Test Distance:9.660m [K=1.0000]  
Remarks:

### LED Avg.L Report

Test:U:12.001V I:0.3247A P:3.8967W PF:1.0000 Freq:0Hz Lamp Flux:57.2166x1 lm		
NAME: 03 RGBW B	TYPE:	WEIGHT:
SPEC.:	DIM.:	SERIAL No.:
MFR.:	SUR.: 0.02*1	Shielding Angle:

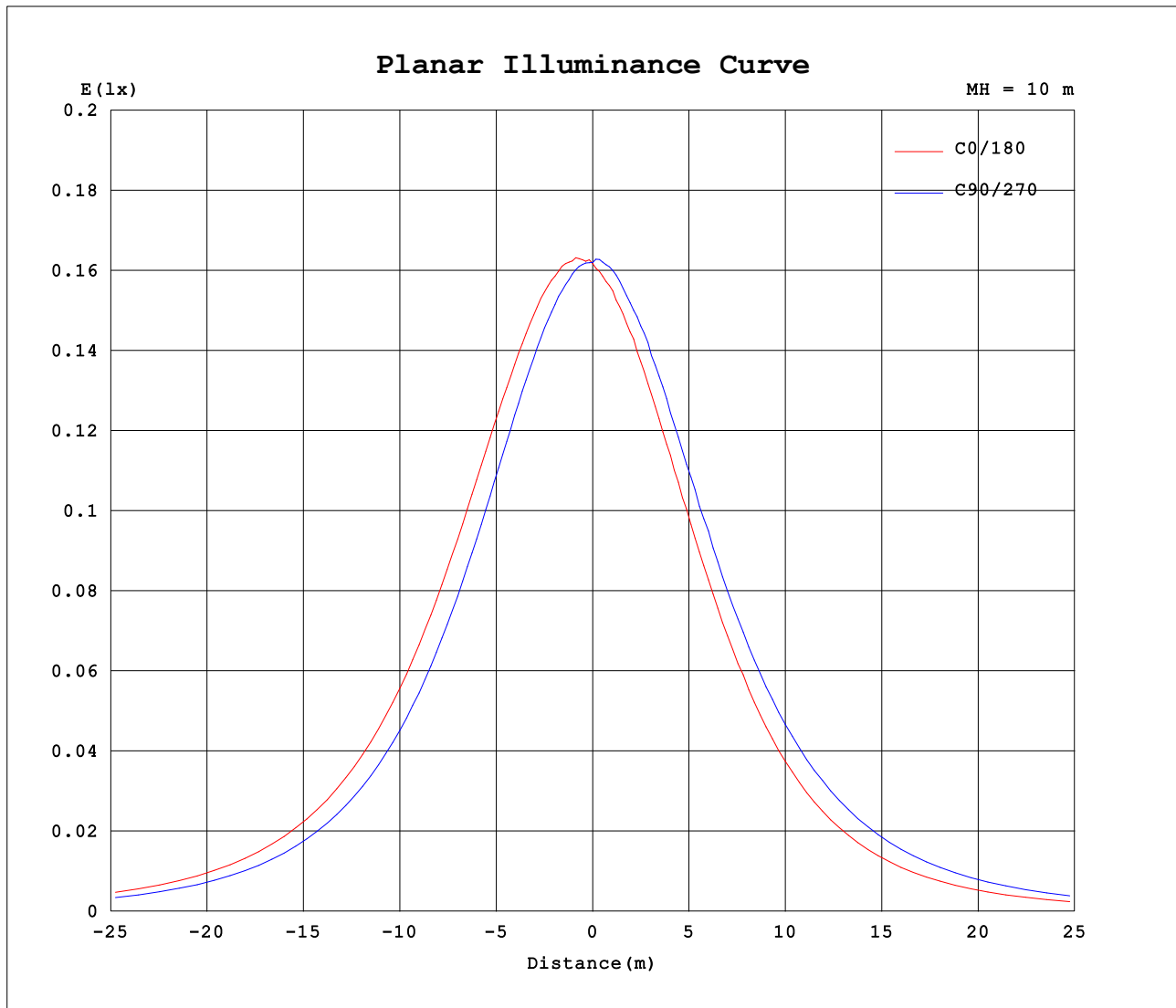
AvgL	cd/m2
L_0~180 (65) av	931
L_0~180 (75) av	875
L_0~180 (85) av	826
L_90~270 (65) av	951
L_90~270 (75) av	889
L_90~270 (85) av	784
L_45 (65) av	974
L_45 (75) av	911
L_45 (85) av	820

Standard: GB/T 29293-2012

C Range: 0 - 360DEG  
C Interval: 22.5DEG  
Test Speed: HIGH  
Temperature:25.3DEG  
Operators:JINZHI  
Test Date:2021-06-29

γ Range: 0 - 180DEG  
γ Interval: 1.0DEG  
Test System:EVERFINE GO-2000A\_V1 SYSTEM V2.00.446  
Humidity:65.0%  
Test Distance:9.660m [K=1.0000]  
Remarks:

## Planar Illuminance Curve



C Range: 0 - 360DEG  
C Interval: 22.5DEG  
Test Speed: HIGH  
Temperature: 25.3DEG  
Operators: JINZHI  
Test Date: 2021-06-29

$\gamma$  Range: 0 - 180DEG  
 $\gamma$  Interval: 1.0DEG  
Test System: EVERFINE GO-2000A\_V1 SYSTEM V2.00.446  
Humidity: 65.0%  
Test Distance: 9.660m [K=1.0000]  
Remarks:

### LUMINOUS DISTRIBUTION INTENSITY DATA

Test:U:12.001V I:0.3247A P:3.8967W PF:1.0000 Freq:0Hz		
Lamp Flux:57.2166x1 lm		
NAME: 03 RGBW B	TYPE:	WEIGHT:
SPEC.:	DIM.:	SERIAL No.:
MFR.:	SUR.: 0.02*1	Shielding Angle:

Table--1

UNIT: cd

C (DEG) γ (DEG)	0	22.5	45	67.5	90	112.5	135	157.5	180	202.5	225	247.5	270	292.5	315	337.5			
0	16.2	16.2	16.2	16.2	16.2	16.2	16.2	16.2	16.2	16.2	16.2	16.2	16.2	16.2	16.2	16.2			
5	16.5	16.5	16.3	16.2	16.2	16.0	15.9	15.8	15.8	15.9	15.9	16.1	16.3	16.3	16.5	16.5			
10	16.8	16.7	16.6	16.2	16.1	15.7	15.6	15.4	15.4	15.5	15.6	15.9	16.1	16.4	16.7	16.8			
15	17.0	16.9	16.5	16.1	15.9	15.4	15.2	15.0	15.0	15.1	15.3	15.6	16.0	16.4	16.7	17.0			
20	17.1	16.9	16.6	16.0	15.7	15.1	14.8	14.5	14.5	14.7	14.9	15.3	15.8	16.4	16.7	17.2			
25	17.2	16.9	16.6	15.8	15.3	14.6	14.3	14.0	13.9	14.2	14.4	14.9	15.4	16.3	16.7	17.2			
30	17.2	16.8	16.5	15.5	14.9	14.2	13.7	13.4	13.3	13.5	13.8	14.4	15.1	16.0	16.4	17.2			
35	16.9	16.5	16.2	15.1	14.3	13.5	13.0	12.7	12.6	12.8	13.2	13.9	14.6	15.6	16.2	16.9			
40	16.5	16.1	15.7	14.5	13.6	12.7	12.3	11.8	11.6	12.0	12.4	13.2	14.0	15.1	15.8	16.5			
45	15.8	15.4	15.0	13.7	12.8	11.9	11.4	10.9	10.6	11.0	11.5	12.3	13.2	14.5	15.2	15.9			
50	14.8	14.5	14.1	12.7	11.8	10.8	10.3	9.68	9.46	9.87	10.5	11.4	12.3	13.7	14.4	15.0			
55	13.5	13.3	12.9	11.5	10.6	9.62	9.08	8.38	8.22	8.63	9.33	10.3	11.2	12.6	13.3	13.7			
60	12.0	11.8	11.5	10.1	9.22	8.25	7.70	6.94	6.88	7.30	8.01	8.98	9.91	11.3	12.0	12.2			
65	10.2	10.0	9.77	8.47	7.64	6.72	6.21	5.50	5.51	5.93	6.57	7.54	8.43	9.69	10.4	10.5			
70	8.30	8.10	7.79	6.69	5.93	5.10	4.65	4.16	4.18	4.55	5.08	5.95	6.79	7.92	8.50	8.53			
75	6.23	6.03	5.74	4.82	4.20	3.46	3.12	2.79	2.83	3.18	3.57	4.33	5.01	5.99	6.43	6.50			
80	4.19	3.88	3.59	2.87	2.45	1.90	1.76	1.60	1.69	1.92	2.11	2.74	3.26	4.04	4.38	4.47			
85	2.12	1.83	1.63	1.16	1.02	0.70	0.77	0.70	0.76	1.00	0.96	1.36	1.71	2.18	2.36	2.41			
90	0.31	0.30	0.38	0.21	0.24	0.11	0.20	0.18	0.12	0.36	0.26	0.47	0.47	0.75	0.71	0.72			
95	0.03	0.05	0.14	0.05	0.11	0.05	0.09	0.03	0.05	0.11	0.05	0.12	0.05	0.12	0.03	0.11			
100	0.03	0.05	0.06	0.05	0.06	0.05	0.06	0.03	0.05	0.06	0.06	0.06	0.05	0.06	0.03	0.06			
105	0.03	0.05	0.05	0.05	0.05	0.05	0.00	0.03	0.05	0.06	0.06	0.06	0.05	0.06	0.03	0.05			
110	0.03	0.05	0.05	0.05	0.05	0.05	0.00	0.03	0.05	0.06	0.06	0.06	0.06	0.05	0.03	0.05			
115	0.03	0.06	0.05	0.05	0.05	0.05	0.00	0.03	0.05	0.06	0.06	0.06	0.06	0.05	0.03	0.05			
120	0.03	0.06	0.05	0.05	0.05	0.05	0.00	0.03	0.05	0.06	0.06	0.06	0.06	0.05	0.03	0.05			
125	0.03	0.06	0.05	0.05	0.05	0.05	0.00	0.03	0.05	0.06	0.06	0.06	0.06	0.05	0.03	0.05			
130	0.03	0.06	0.05	0.05	0.05	0.05	0.02	0.03	0.05	0.06	0.06	0.06	0.06	0.05	0.03	0.05			
135	0.03	0.06	0.05	0.05	0.05	0.05	0.02	0.03	0.05	0.06	0.06	0.06	0.06	0.05	0.03	0.05			
140	0.03	0.06	0.05	0.05	0.05	0.05	0.02	0.03	0.05	0.06	0.06	0.06	0.06	0.05	0.03	0.05			
145	0.03	0.06	0.05	0.05	0.05	0.05	0.02	0.03	0.05	0.06	0.06	0.06	0.06	0.05	0.03	0.05			
150	0.06	0.06	0.05	0.05	0.05	0.05	0.02	0.03	0.05	0.06	0.06	0.06	0.06	0.05	0.03	0.05			
155	0.06	0.06	0.05	0.05	0.05	0.05	0.02	0.03	0.05	0.06	0.06	0.06	0.06	0.05	0.03	0.05			
160	0.06	0.06	0.05	0.05	0.05	0.05	0.02	0.03	0.05	0.06	0.06	0.06	0.06	0.05	0.03	0.05			
165	0.06	0.06	0.05	0.05	0.05	0.05	0.02	0.03	0.05	0.06	0.06	0.06	0.06	0.05	0.03	0.05			
170	0.06	0.06	0.05	0.05	0.05	0.05	0.02	0.03	0.05	0.06	0.06	0.06	0.06	0.05	0.03	0.05			
175	0.06	0.06	0.05	0.05	0.05	0.05	0.02	0.03	0.05	0.06	0.06	0.06	0.06	0.05	0.03	0.05			
180	0.06	0.03	0.05	0.05	0.05	0.05	0.02	0.03	0.05	0.06	0.06	0.06	0.06	0.00	0.03	0.05			

C Range: 0 - 360DEG  
C Interval: 22.5DEG  
Test Speed: HIGH  
Temperature:25.3DEG  
Operators:JINZHI  
Test Date:2021-06-29

γ Range: 0 - 180DEG  
γ Interval: 1.0DEG  
Test System:EVERFINE GO-2000A\_V1 SYSTEM V2.00.446  
Humidity:65.0%  
Test Distance:9.660m [K=1.0000]  
Remarks: