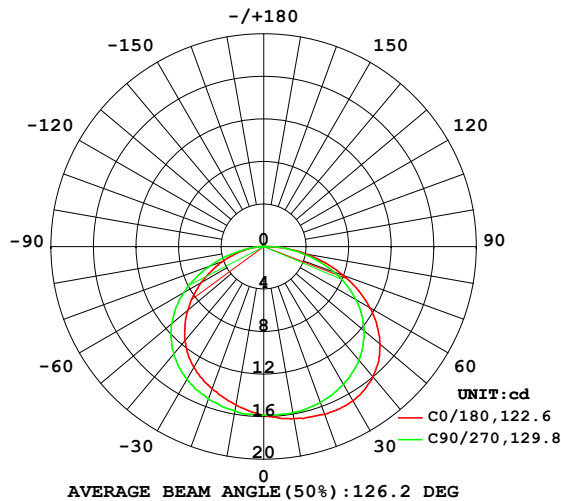


LUMINAIRE PHOTOMETRIC TEST REPORT

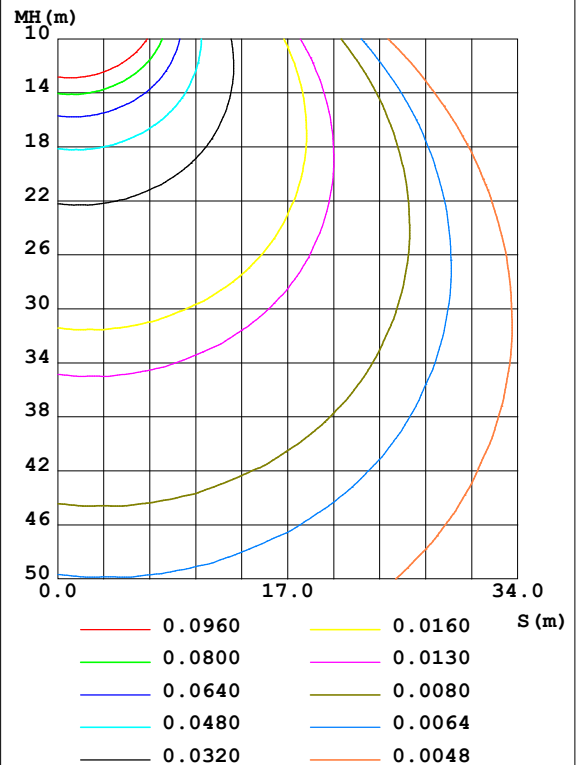
Test:U:12.001V I:0.3255A P:3.9063W PF:1.0000 Freq:0Hz Lamp Flux:55.9866x1 lm		
NAME: 05 RGBW B	TYPE:	WEIGHT:
SPEC.:	DIM.:	SERIAL No.:
MFR.:	SUR.: 0.02*1	Shielding Angle:

DATA OF LAMP		PHOTOMETRIC DATA Eff: 14.33 lm/W			
MODEL		I _{max} (cd)	16.83	S/MH(C0/180)	1.24
NOMINAL POWER(W)		LOR(%)	100.0	S/MH(C90/270)	1.36
RATED VOLTAGE(V)		TOTAL FLUX(lm)	55.987	η UP,DN(C0-180)	0.4,52.5
NOMINAL FLUX(lm)	55.9866	CIE CLASS	DIRECT	η UP,DN(C180-360)	0.3,46.7
LAMPS INSIDE	1	η up(%)	0.7	CIBSE SHR NOM	1.50
TEST VOLTAGE(V)		η down(%)	99.3	CIBSE SHR MAX	1.55

LUMINOUS INTENSITY DISTRIBUTION DIAGRAM



C0 PLANE ISOLUX DIAGRAM (UNIT:lx)



C Range: 0 - 360DEG
C Interval: 22.5DEG
Test Speed: HIGH
Temperature:25.3DEG
Operators:JINZHI
Test Date:2021-07-02

γ Range: 0 - 180DEG
γ Interval: 1.0DEG
Test System:EVERFINE GO-2000A_V1 SYSTEM V2.00.446
Humidity:65.0%
Test Distance:9.660m [K=1.0000]
Remarks:

ZONAL FLUX DIAGRAM

ZONAL FLUX DIAGRAM:

γ	C0	C45	C90	C135	C180	C225	C270	C315	γ	Φ zone	Φ total	%lum,lamp
10	16.41	16.24	15.87	15.29	15.10	15.27	15.70	16.14	0- 10	1.508	1.508	2.69,2.69
20	16.80	16.34	15.59	14.54	14.22	14.38	15.26	16.14	10- 20	4.414	5.922	10.6,10.6
30	16.77	16.32	14.98	13.65	13.14	13.34	14.43	15.77	20- 30	6.989	12.91	23.1,23.1
40	15.97	15.68	13.92	12.47	11.57	11.87	13.15	14.94	30- 40	8.955	21.87	39.1,39.1
50	14.27	14.24	12.33	10.69	9.325	9.845	11.28	13.33	40- 50	9.932	31.80	56.8,56.8
60	11.56	11.89	10.02	8.275	6.779	7.261	8.684	10.73	50- 60	9.575	41.37	73.9,73.9
70	7.975	8.529	7.014	5.287	4.142	4.328	5.467	7.136	60- 70	7.756	49.13	87.8,87.8
80	4.028	4.594	3.601	2.373	1.690	1.623	2.100	3.211	70- 80	4.786	53.92	96.3,96.3
90	0.2633	1.051	0.7795	0.4844	0.1062	0.2874	0.1966	0.2108	80- 90	1.655	55.57	99.3,99.3
100	0.0457	0.0611	0.0615	0.0755	0.0610	0.0304	0.0457	0.0604	90-100	0.1586	55.73	99.5,99.5
110	0.0457	0.0152	0.0610	0.0604	0.0762	0.0304	0.0457	0.0604	100-110	0.0483	55.78	99.6,99.6
120	0.0457	0.0304	0.0610	0.0604	0.0914	0.0304	0.0457	0.0755	110-120	0.0472	55.83	99.7,99.7
130	0.0457	0.0304	0.0610	0.0604	0.0914	0.0304	0.0457	0.0755	120-130	0.0450	55.87	99.8,99.8
140	0.0457	0.0304	0.0610	0.0604	0.0914	0.0304	0.0457	0.0906	130-140	0.0384	55.91	99.9,99.9
150	0.0457	0.0304	0.0610	0.0604	0.1067	0.0608	0.0457	0.0906	140-150	0.0325	55.94	99.9,99.9
160	0.0457	0.0304	0.0610	0.0604	0.1067	0.0608	0.0457	0.1057	150-160	0.0248	55.97	100,100
170	0.0457	0.0304	0.0610	0.0604	0.1067	0.0608	0.0457	0.1057	160-170	0.0154	55.98	100,100
180	0.0457	0.0304	0.0610	0.0302	0.0152	0.0608	0.0457	0.1208	170-180	0.0050	55.99	100,100
DEG	LUMINOUS INTENSITY:cd									UNIT:lm		

Conical surface Flux(90deg): 26.788 lm

%lum = 47.8%

%lamp = 47.8%

Conical surface Flux(120deg): 41.374 lm

%lum = 73.9%

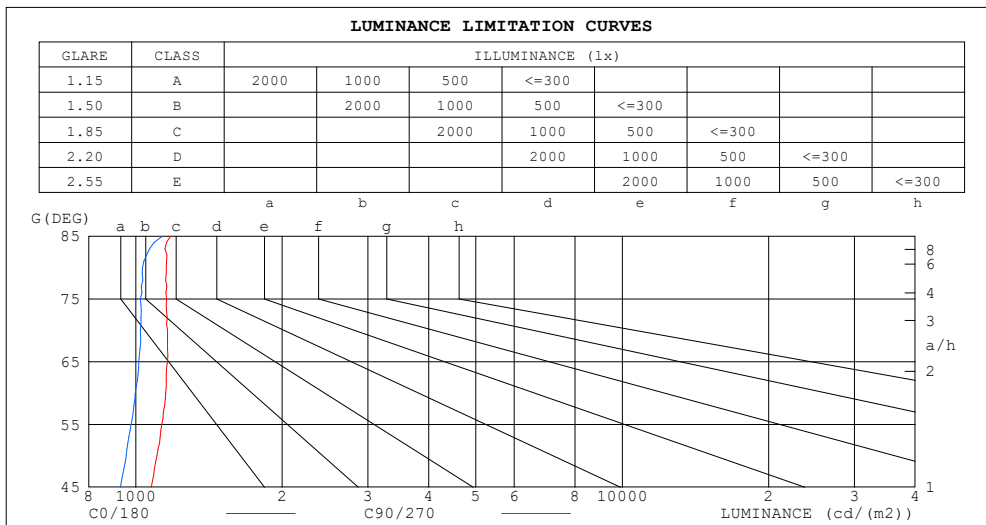
%lamp = 73.9%

C Range: 0 - 360DEG
C Interval: 22.5DEG
Test Speed: HIGH
Temperature:25.3DEG
Operators:JINZHI
Test Date:2021-07-02

γ Range: 0 - 180DEG
 γ Interval: 1.0DEG
Test System:EVERFINE GO-2000A_V1 SYSTEM V2.00.446
Humidity:65.0%
Test Distance:9.660m [K=1.0000]
Remarks:

LUMINANCE LIMITATION CURVES

Test:U:12.001V I:0.3255A P:3.9063W PF:1.0000 Freq:0Hz Lamp Flux:55.9866x1 lm		
NAME: 05 RGBW B	TYPE:	WEIGHT:
SPEC.:	DIM.:	SERIAL No.:
MFR.:	SUR.: 0.02*1	Shielding Angle:



LUMINANCE cd/(m2)		
G (DEG)	C0/180	C90/270
85	1179	1135
80	1155	1033
75	1157	1022
70	1162	1022
65	1163	1014
60	1151	998
55	1131	978
50	1106	956
45	1076	930

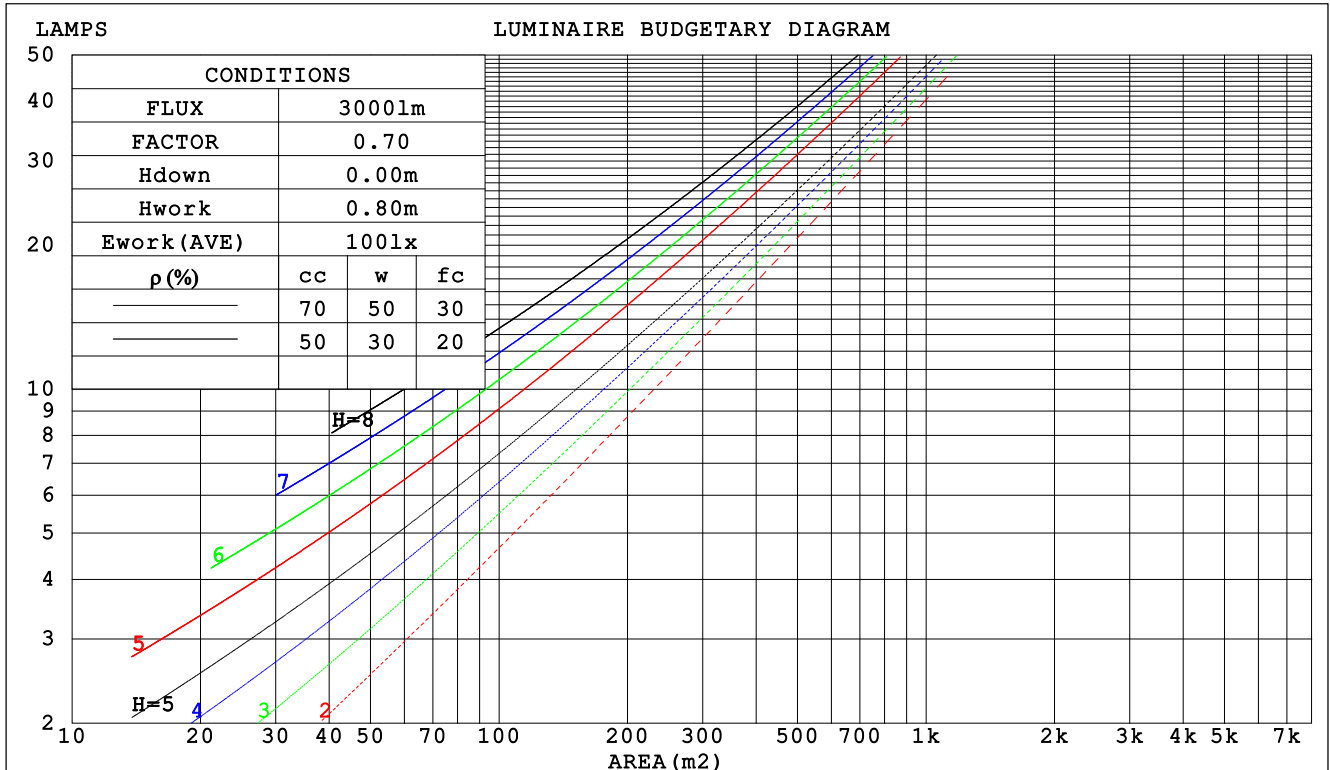
C Range: 0 - 360DEG
 C Interval: 22.5DEG
 Test Speed: HIGH
 Temperature: 25.3DEG
 Operators: JINZHI
 Test Date: 2021-07-02

γ Range: 0 - 180DEG
 γ Interval: 1.0DEG
 Test System: EVERFINE GO-2000A_V1 SYSTEM V2.00.446
 Humidity: 65.0%
 Test Distance: 9.660m [K=1.0000]
 Remarks:

CU AND LUMINAIRE BUDGETARY ESTIMATE DIAGRAM

Test:U:12.001V I:0.3255A P:3.9063W PF:1.0000 Freq:0Hz		
Lamp Flux:55.9866x1 lm		
NAME: 05 RGBW B	TYPE:	WEIGHT:
SPEC.:	DIM.:	SERIAL No.:
MFR.:	SUR.: 0.02*1	Shielding Angle:

pcc	80%			70%			50%			30%			10%			0
p _w	50%	30%	10%	50%	30%	10%	50%	30%	10%	50%	30%	10%	50%	30%	10%	0
p _{fc}	20%			20%			20%			20%			20%			0
RCR	RCR:Room Cavity Ratio															



C Range: 0 - 360DEG
C Interval: 22.5DEG
Test Speed: HIGH
Temperature:25.3DEG
Operators:JINZHI
Test Date:2021-07-02

γ Range: 0 - 180DEG
γ Interval: 1.0DEG
Test System:EVERFINE GO-2000A_V1 SYSTEM V2.00.446
Humidity:65.0%
Test Distance:9.660m [K=1.0000]
Remarks:

WEC AND CCEC

Test:U:12.001V I:0.3255A P:3.9063W PF:1.0000 Freq:0Hz		
Lamp Flux:55.9866x1 lm		
NAME: 05 RGBW B	TYPE:	WEIGHT:
SPEC.:	DIM.:	SERIAL No.:
MFR.:	SUR.: 0.02*1	Shielding Angle:

pcc	80%			70%			50%			30%			10%			0	
pw	50%	30%	10%	50%	30%	10%	50%	30%	10%	50%	30%	10%	50%	30%	10%	0	
pfc	20%			20%			20%			20%			20%			0	
RCR	RCR:Room Cavity Ratio						Wall Exitance Coefficients (WEC)										
0.0																	
1.0	.336	.191	.061	.329	.188	.060	.315	.181	.058	.302	.174	.056	.290	.168	.054		
2.0	.311	.171	.052	.305	.168	.052	.293	.163	.051	.281	.158	.049	.271	.153	.048		
3.0	.285	.152	.045	.280	.150	.045	.269	.146	.044	.259	.142	.043	.249	.138	.043		
4.0	.262	.136	.040	.256	.134	.040	.247	.131	.039	.238	.128	.039	.229	.125	.038		
5.0	.240	.123	.036	.236	.121	.035	.227	.118	.035	.219	.116	.034	.212	.113	.034		
6.0	.222	.111	.032	.218	.110	.032	.210	.108	.031	.203	.106	.031	.196	.103	.031		
7.0	.206	.102	.029	.202	.101	.029	.195	.099	.028	.189	.097	.028	.183	.095	.028		
8.0	.192	.094	.026	.188	.093	.026	.182	.091	.026	.176	.089	.026	.171	.088	.026		
9.0	.179	.087	.024	.176	.086	.024	.171	.084	.024	.165	.083	.024	.161	.082	.024		
10.0	.168	.081	.022	.165	.080	.022	.160	.079	.022	.156	.077	.022	.151	.076	.022		

pcc	80%			70%			50%			30%			10%			0
pw	50%	30%	10%	50%	30%	10%	50%	30%	10%	50%	30%	10%	50%	30%	10%	0
pfc	20%			20%			20%			20%			20%			0
RCR	RCR:Room Cavity Ratio						Ceiling Cavity Exitance Coefficients(CCEC)									
0.0	.196	.196	.196	.168	.168	.168	.114	.114	.114	.066	.066	.066	.021	.021	.021	
1.0	.188	.162	.138	.161	.139	.119	.110	.095	.082	.063	.055	.048	.020	.018	.015	
2.0	.181	.138	.101	.155	.118	.088	.106	.082	.061	.061	.048	.036	.020	.015	.012	
3.0	.173	.120	.078	.149	.104	.068	.102	.072	.047	.059	.042	.028	.019	.014	.009	
4.0	.166	.107	.062	.142	.093	.054	.098	.064	.038	.057	.038	.023	.018	.012	.007	
5.0	.158	.097	.051	.136	.084	.045	.094	.059	.032	.054	.034	.019	.017	.011	.006	
6.0	.151	.089	.044	.130	.077	.038	.089	.054	.027	.052	.032	.016	.017	.010	.005	
7.0	.144	.082	.038	.124	.071	.033	.086	.050	.024	.050	.029	.014	.016	.010	.005	
8.0	.137	.076	.034	.118	.066	.029	.082	.046	.021	.048	.027	.012	.015	.009	.004	
9.0	.131	.071	.030	.113	.062	.027	.078	.043	.019	.046	.026	.011	.015	.008	.004	
10.0	.125	.067	.028	.108	.058	.024	.075	.041	.017	.044	.024	.010	.014	.008	.003	

C Range: 0 - 360DEG
C Interval: 22.5DEG
Test Speed: HIGH
Temperature:25.3DEG
Operators:JINZHI
Test Date:2021-07-02

γ Range: 0 - 180DEG
γ Interval: 1.0DEG
Test System:EVERFINE GO-2000A_V1 SYSTEM V2.00.446
Humidity:65.0%
Test Distance:9.660m [K=1.0000]
Remarks:

UGR(Unified Glare Rating) Table

Test:U:12.001V I:0.3255A P:3.9063W PF:1.0000 Freq:0Hz										
Lamp Flux:55.9866x1 lm										
NAME: 05 RGBW B					TYPE:			WEIGHT:		
SPEC.:					DIM.:			SERIAL No.:		
MFR.:					SUR.: 0.02*1			Shielding Angle:		
ceiling/cavity	0.7	0.7	0.5	0.5	0.3	0.7	0.7	0.5	0.5	0.3
walls	0.5	0.3	0.5	0.3	0.3	0.5	0.3	0.5	0.3	0.3
working plane	0.2	0.2	0.2	0.2	0.2	0.2	0.2	0.2	0.2	0.2
Room dimensions	Viewed crosswise					Viewed endwise				
x = 2H y = 2H	24.3	25.8	24.5	26.1	26.3	23.6	25.2	23.9	25.4	25.7
3H	26.2	27.6	26.5	27.9	28.1	25.5	27.0	25.8	27.2	27.5
4H	27.0	28.4	27.3	28.7	28.9	26.3	27.7	26.6	28.0	28.3
6H	27.7	29.0	28.0	29.3	29.6	27.0	28.3	27.3	28.6	28.9
8H	27.9	29.2	28.3	29.5	29.8	27.2	28.5	27.6	28.8	29.1
12H	28.1	29.3	28.5	29.6	30.0	27.4	28.7	27.8	29.0	29.3
4H 2H	25.0	26.4	25.3	26.7	27.0	24.6	26.0	24.9	26.2	26.5
3H	27.1	28.4	27.5	28.7	29.0	26.6	27.8	27.0	28.2	28.5
4H	28.1	29.2	28.5	29.6	29.9	27.6	28.7	27.9	29.0	29.4
6H	28.9	29.9	29.3	30.3	30.7	28.4	29.4	28.8	29.7	30.1
8H	29.3	30.2	29.7	30.6	31.0	28.7	29.6	29.1	30.0	30.4
12H	29.5	30.4	30.0	30.8	31.2	29.0	29.8	29.4	30.2	30.6
8H 4H	28.5	29.4	28.9	29.8	30.2	28.1	29.0	28.5	29.4	29.8
6H	29.6	30.3	30.0	30.8	31.2	29.1	29.9	29.5	30.3	30.7
8H	30.0	30.7	30.5	31.2	31.6	29.5	30.2	30.0	30.7	31.1
12H	30.4	31.0	30.9	31.5	32.0	29.9	30.5	30.4	31.0	31.5
12H 4H	28.6	29.4	29.0	29.8	30.2	28.1	29.0	28.6	29.4	29.8
6H	29.7	30.4	30.2	30.8	31.3	29.2	29.9	29.7	30.4	30.8
8H	30.2	30.8	30.7	31.3	31.8	29.8	30.4	30.2	30.8	31.3
Variations with the observer position at spacings(CIE Pub.117):										
S = 1.0H	+ 0.1 / - 0.1					+ 0.1 / - 0.1				
1.5H	+ 0.2 / - 0.3					+ 0.2 / - 0.3				
2.0H	+ 0.2 / - 0.4					+ 0.2 / - 0.5				

CIE Pub.117, 55.99 lm Total Lamp Luminous Flux Correct (8log(F/F0) = -10.0)
Area: 0.02 m2

C Range: 0 - 360DEG
C Interval: 22.5DEG
Test Speed: HIGH
Temperature:25.3DEG
Operators:JINZHI
Test Date:2021-07-02

γ Range: 0 - 180DEG
γ Interval: 1.0DEG
Test System:EVERFINE GO-2000A_V1 SYSTEM V2.00.446
Humidity:65.0%
Test Distance:9.660m [K=1.0000]
Remarks:

UTILIZATION FACTORS TABLE

Test:U:12.001V I:0.3255A P:3.9063W PF:1.0000 Freq:0Hz Lamp Flux:55.9866x1 lm		
NAME: 05 RGBW B	TYPE:	WEIGHT:
SPEC.:	DIM.:	SERIAL No.:
MFR.:	SUR.: 0.02*1	Shielding Angle:

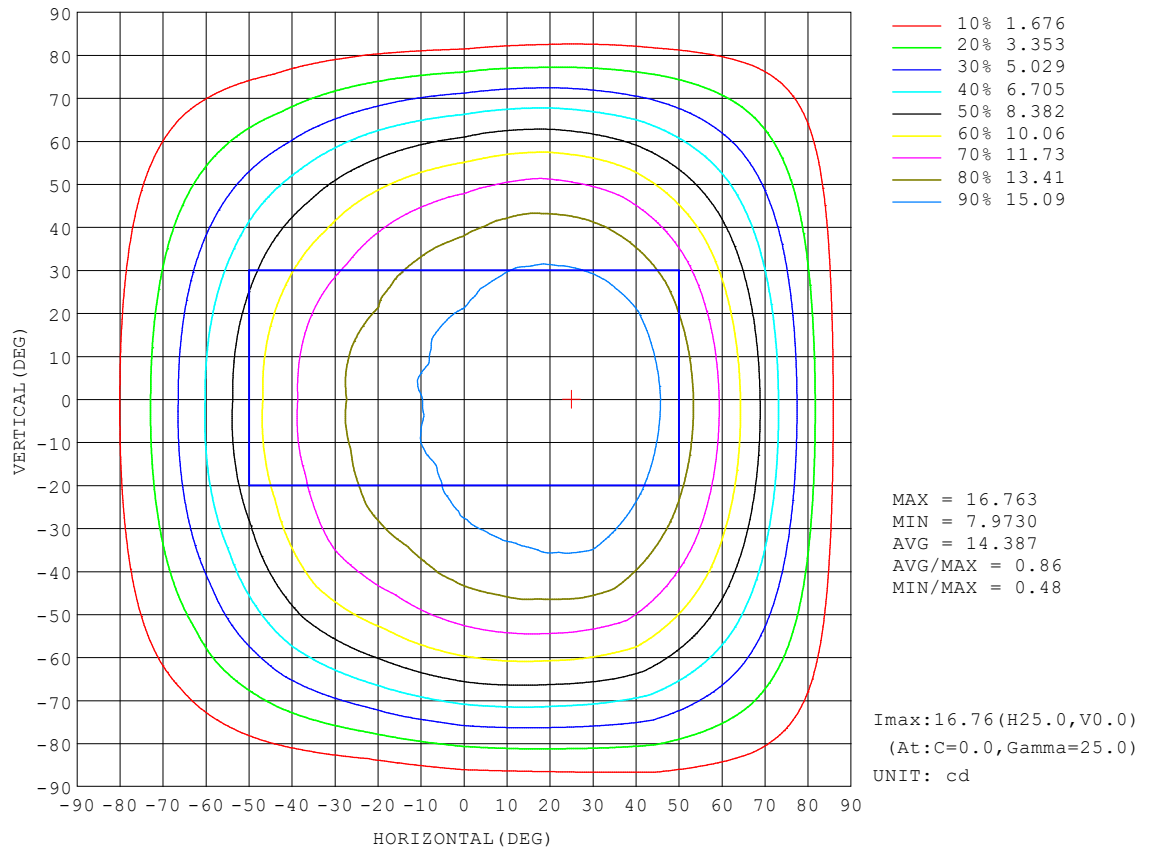
REFLECTANCE										
Ceiling	0.8	0.8	0.8	0.7	0.7	0.7	0.5	0.5	0.5	0
Walls	0.7	0.5	0.3	0.7	0.5	0.3	0.7	0.5	0.3	0
Working plane	0.2	0.2	0.2	0.2	0.2	0.2	0.2	0.2	0.2	0
ROOM INDEX	UTILIZATION FACTORS (PERCENT) $k(RI) \times RCR = 5$									
$k = 0.60$	54	42	35	54	42	35	52	41	35	28
0.80	64	52	44	63	52	44	61	51	44	36
1.00	73	61	53	72	60	53	69	62	52	45
1.25	80	69	61	79	68	61	76	67	60	52
1.50	85	75	67	84	74	67	80	72	66	57
2.00	93	83	76	91	82	76	87	80	74	66
2.50	97	88	82	95	87	81	91	84	79	70
3.00	100	93	87	98	91	86	94	88	84	75
4.00	105	98	93	102	97	92	98	93	89	80
5.00	107	102	98	105	100	96	100	96	93	83
ROOM INDEX	UF (total)									Direct
According to DIN EN 13032-2 2004			Suspended					SHRNOM = 1.25		

C Range: 0 - 360DEG
C Interval: 22.5DEG
Test Speed: HIGH
Temperature:25.3DEG
Operators:JINZHI
Test Date:2021-07-02

γ Range: 0 - 180DEG
 γ Interval: 1.0DEG
Test System:EVERFINE GO-2000A_V1 SYSTEM V2.00.446
Humidity:65.0%
Test Distance:9.660m [K=1.0000]
Remarks:

ISOCANDELA DIAGRAM

Test:U:12.001V I:0.3255A P:3.9063W PF:1.0000 Freq:0Hz Lamp Flux:55.9866x1 lm		
NAME: 05 RGBW B	TYPE:	WEIGHT:
SPEC.:	DIM.:	SERIAL No.:
MFR.:	SUR.: 0.02*1	Shielding Angle:

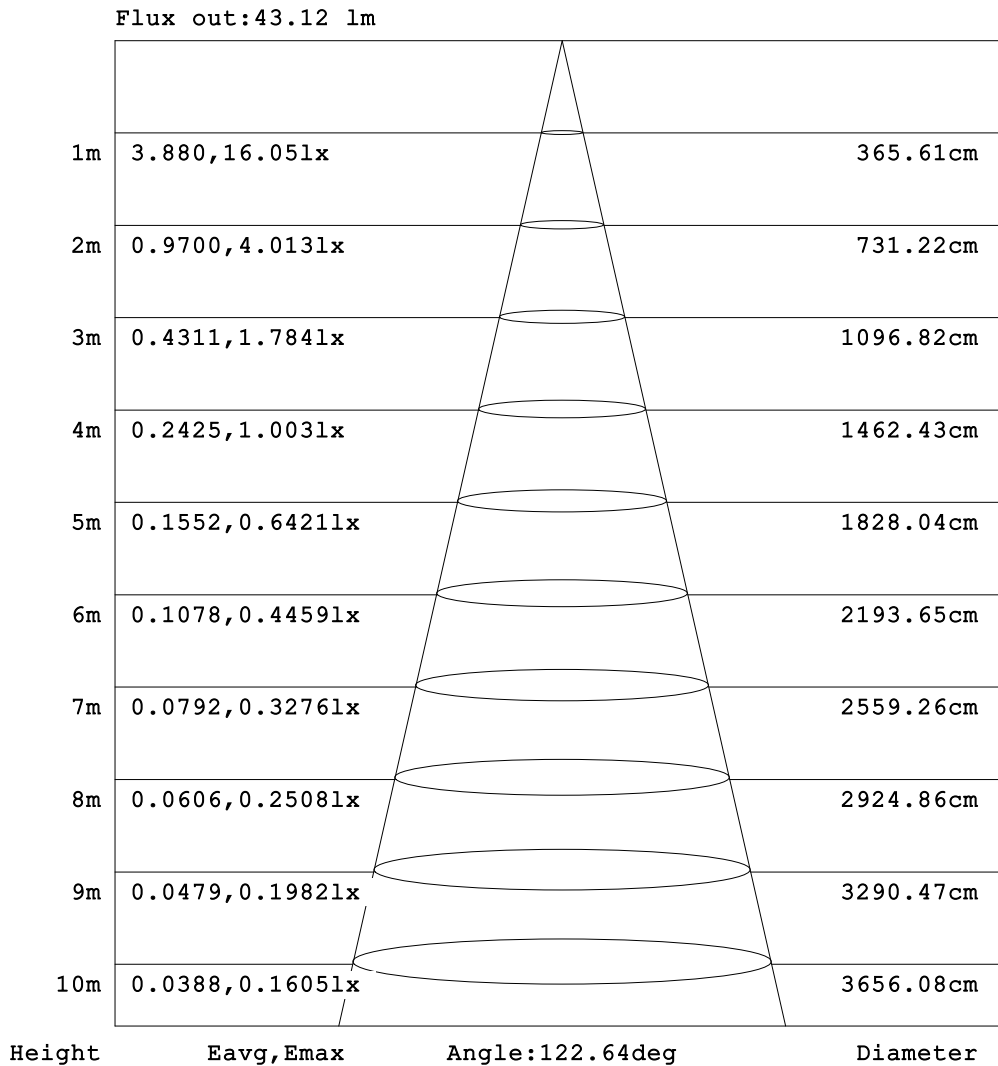


C Range: 0 - 360DEG
C Interval: 22.5DEG
Test Speed: HIGH
Temperature:25.3DEG
Operators:JINZHI
Test Date:2021-07-02

γ Range: 0 - 180DEG
γ Interval: 1.0DEG
Test System:EVERFINE GO-2000A_V1 SYSTEM V2.00.446
Humidity:65.0%
Test Distance:9.660m [K=1.0000]
Remarks:

AAI Figure

Test:U:12.001V I:0.3255A P:3.9063W PF:1.0000 Freq:0Hz Lamp Flux:55.9866x1 lm		
NAME: 05 RGBW B	TYPE:	WEIGHT:
SPEC.:	DIM.:	SERIAL No.:
MFR.:	SUR.: 0.02*1	Shielding Angle:



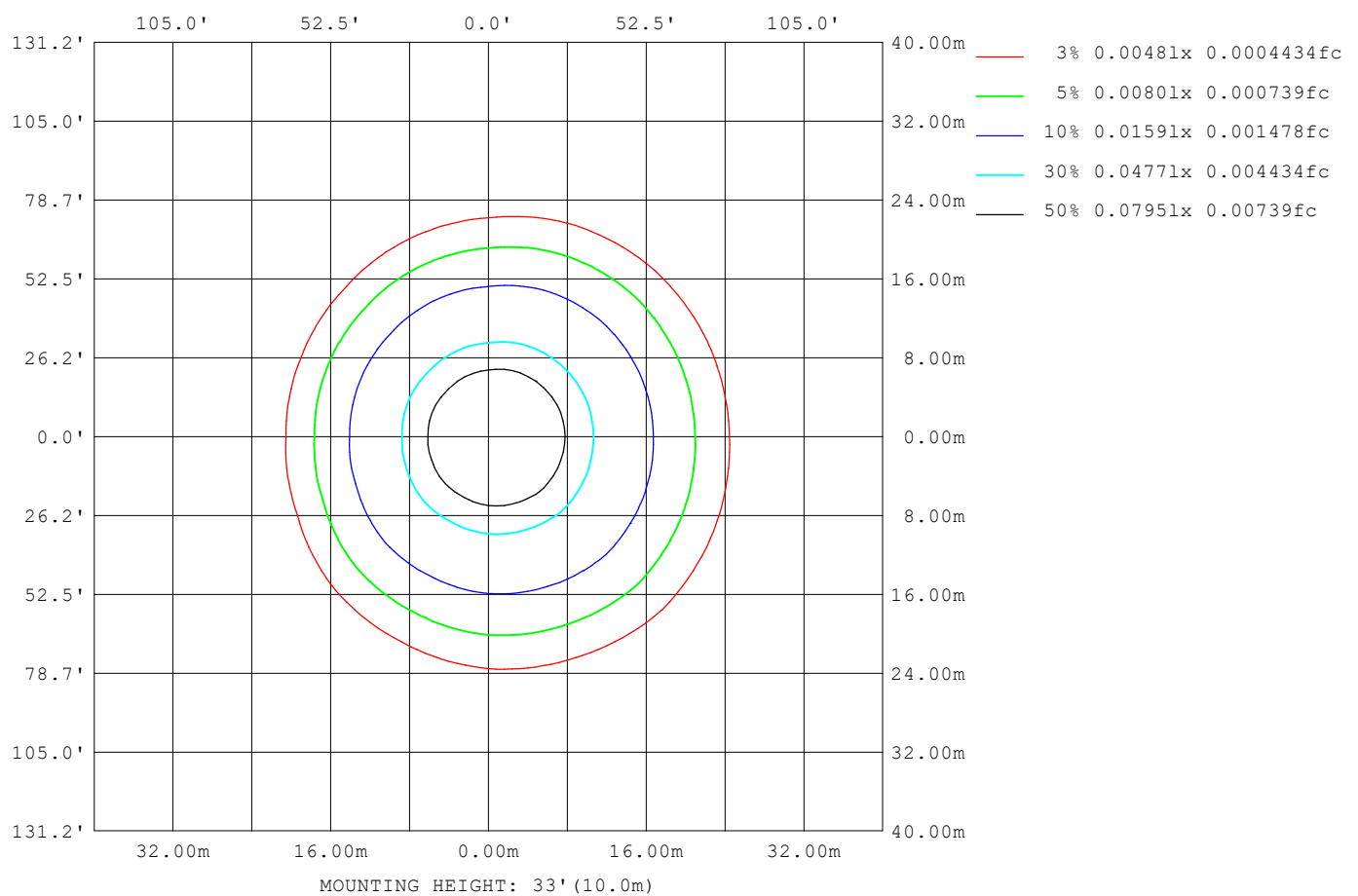
Note:The Curves indicate the illuminated area and the average illumination when the luminaire is at different distance.

C Range: 0 - 360DEG
C Interval: 22.5DEG
Test Speed: HIGH
Temperature:25.3DEG
Operators:JINZHI
Test Date:2021-07-02

γ Range: 0 - 180DEG
γ Interval: 1.0DEG
Test System:EVERFINE GO-2000A_V1 SYSTEM V2.00.446
Humidity:65.0%
Test Distance:9.660m [K=1.0000]
Remarks:

ISOLUX DIAGRAM

Test:U:12.001V I:0.3255A P:3.9063W PF:1.0000 Freq:0Hz Lamp Flux:55.9866x1 lm		
NAME: 05 RGBW B	TYPE:	WEIGHT:
SPEC.:	DIM.:	SERIAL No.:
MFR.:	SUR.: 0.02*1	Shielding Angle:



C Range: 0 - 360DEG
 C Interval: 22.5DEG
 Test Speed: HIGH
 Temperature:25.3DEG
 Operators:JINZHI
 Test Date:2021-07-02

γ Range: 0 - 180DEG
 γ Interval: 1.0DEG
 Test System:EVERFINE GO-2000A_V1 SYSTEM V2.00.446
 Humidity:65.0%
 Test Distance:9.660m [K=1.0000]
 Remarks:

LED Avg.L Report

Test:U:12.001V I:0.3255A P:3.9063W PF:1.0000 Freq:0Hz Lamp Flux:55.9866x1 lm		
NAME: 05 RGBW B	TYPE:	WEIGHT:
SPEC.:	DIM.:	SERIAL No.:
MFR.:	SUR.: 0.02*1	Shielding Angle:

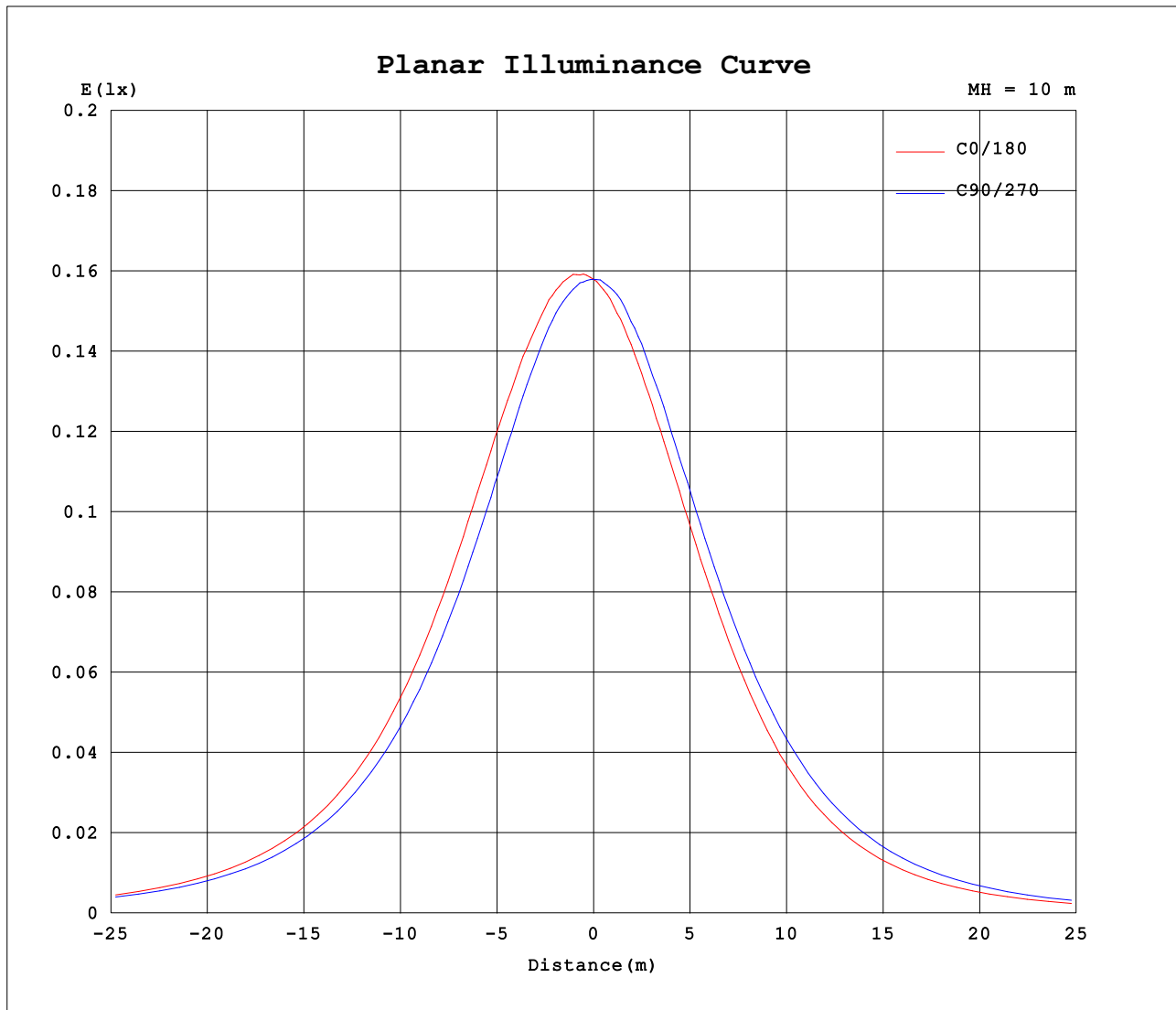
AvgL	cd/m2
L_0~180 (65) av	905
L_0~180 (75) av	856
L_0~180 (85) av	810
L_90~270 (65) av	930
L_90~270 (75) av	872
L_90~270 (85) av	814
L_45 (65) av	946
L_45 (75) av	888
L_45 (85) av	854

Standard: GB/T 29293-2012

C Range: 0 - 360DEG
C Interval: 22.5DEG
Test Speed: HIGH
Temperature:25.3DEG
Operators:JINZHI
Test Date:2021-07-02

γ Range: 0 - 180DEG
γ Interval: 1.0DEG
Test System:EVERFINE GO-2000A_V1 SYSTEM V2.00.446
Humidity:65.0%
Test Distance:9.660m [K=1.0000]
Remarks:

Planar Illuminance Curve



C Range: 0 - 360DEG
C Interval: 22.5DEG
Test Speed: HIGH
Temperature: 25.3DEG
Operators: JINZHI
Test Date: 2021-07-02

γ Range: 0 - 180DEG
 γ Interval: 1.0DEG
Test System: EVERFINE GO-2000A_V1 SYSTEM V2.00.446
Humidity: 65.0%
Test Distance: 9.660m [K=1.0000]
Remarks:

LUMINOUS DISTRIBUTION INTENSITY DATA

Test:U:12.001V I:0.3255A P:3.9063W PF:1.0000 Freq:0Hz Lamp Flux:55.9866x1 lm																	
NAME: 05 RGBW B									TYPE:						WEIGHT:		
SPEC.:									DIM.:						SERIAL No.:		
MFR.:									SUR.: 0.02*1						Shielding Angle:		

Table--1

UNIT: cd

C (DEG) γ (DEG)	0	22.5	45	67.5	90	112.5	135	157.5	180	202.5	225	247.5	270	292.5	315	337.5			
0	15.9	15.9	15.9	15.9	15.9	15.9	15.9	15.9	15.9	15.9	15.9	15.9	15.9	15.9	15.9	15.9			
5	16.2	16.1	16.0	15.9	15.9	15.7	15.6	15.6	15.5	15.5	15.5	15.7	15.8	15.9	16.0	16.1			
10	16.4	16.3	16.2	16.0	15.9	15.5	15.3	15.2	15.1	15.1	15.3	15.4	15.7	16.0	16.1	16.4			
15	16.6	16.5	16.3	15.9	15.8	15.3	14.9	14.8	14.7	14.7	14.8	15.2	15.5	16.0	16.2	16.5			
20	16.8	16.5	16.3	15.8	15.6	14.9	14.5	14.4	14.2	14.3	14.4	14.8	15.3	15.9	16.1	16.6			
25	16.8	16.5	16.3	15.7	15.3	14.6	14.1	13.9	13.7	13.7	13.9	14.3	14.9	15.7	16.0	16.6			
30	16.8	16.4	16.3	15.4	15.0	14.2	13.6	13.3	13.1	13.2	13.3	13.8	14.4	15.3	15.8	16.6			
35	16.5	16.2	16.1	15.1	14.5	13.6	13.1	12.7	12.4	12.5	12.6	13.1	13.9	14.9	15.5	16.3			
40	16.0	15.7	15.7	14.7	13.9	13.0	12.5	11.9	11.6	11.6	11.9	12.4	13.2	14.3	14.9	15.8			
45	15.3	15.1	15.1	14.0	13.2	12.2	11.6	10.9	10.5	10.6	10.9	11.5	12.3	13.6	14.3	15.1			
50	14.3	14.2	14.2	13.1	12.3	11.3	10.7	9.79	9.32	9.47	9.85	10.5	11.3	12.6	13.3	14.1			
55	13.0	13.1	13.2	12.1	11.3	10.2	9.57	8.56	8.11	8.21	8.60	9.29	10.1	11.4	12.2	12.8			
60	11.6	11.7	11.9	10.8	10.02	8.97	8.27	7.23	6.78	6.87	7.26	7.92	8.68	9.92	10.7	11.3			
65	9.86	10.1	10.3	9.29	8.60	7.59	6.86	5.86	5.44	5.47	5.79	6.41	7.13	8.25	9.04	9.58			
70	7.98	8.27	8.53	7.76	7.01	6.09	5.29	4.48	4.14	4.14	4.33	4.84	5.47	6.43	7.14	7.68			
75	6.01	6.35	6.57	5.86	5.31	4.49	3.82	3.16	2.85	2.84	2.85	3.27	3.72	4.56	5.14	5.66			
80	4.03	4.34	4.59	4.06	3.60	2.86	2.37	1.90	1.69	1.71	1.62	1.88	2.10	2.70	3.21	3.68			
85	2.06	2.37	2.63	2.25	1.99	1.43	1.23	0.91	0.76	0.83	0.74	0.83	0.85	1.21	1.36	1.74			
90	0.26	0.69	1.05	0.80	0.78	0.49	0.48	0.24	0.11	0.30	0.29	0.27	0.20	0.32	0.21	0.41			
95	0.06	0.06	0.26	0.20	0.23	0.05	0.17	0.06	0.05	0.09	0.03	0.12	0.05	0.08	0.06	0.08			
100	0.05	0.01	0.06	0.05	0.06	0.03	0.08	0.05	0.06	0.06	0.03	0.09	0.05	0.05	0.06	0.06			
105	0.05	0.00	0.00	0.05	0.06	0.03	0.06	0.05	0.08	0.06	0.03	0.02	0.05	0.05	0.06	0.06			
110	0.05	0.00	0.02	0.05	0.06	0.03	0.06	0.05	0.08	0.06	0.03	0.02	0.05	0.05	0.06	0.05			
115	0.05	0.06	0.03	0.05	0.06	0.03	0.06	0.05	0.09	0.06	0.03	0.02	0.05	0.05	0.06	0.05			
120	0.05	0.08	0.03	0.05	0.06	0.03	0.06	0.05	0.09	0.06	0.03	0.02	0.05	0.05	0.08	0.05			
125	0.05	0.08	0.03	0.05	0.06	0.03	0.06	0.05	0.09	0.06	0.03	0.02	0.05	0.05	0.08	0.05			
130	0.05	0.08	0.03	0.05	0.06	0.03	0.06	0.03	0.09	0.06	0.03	0.02	0.05	0.05	0.08	0.05			
135	0.05	0.08	0.03	0.05	0.06	0.03	0.06	0.03	0.09	0.06	0.03	0.02	0.05	0.05	0.08	0.05			
140	0.05	0.08	0.03	0.05	0.06	0.03	0.06	0.03	0.09	0.06	0.03	0.02	0.05	0.05	0.09	0.05			
145	0.05	0.08	0.03	0.05	0.06	0.03	0.06	0.03	0.11	0.06	0.03	0.02	0.05	0.05	0.09	0.05			
150	0.05	0.08	0.03	0.03	0.06	0.03	0.06	0.03	0.11	0.06	0.06	0.02	0.05	0.05	0.09	0.05			
155	0.05	0.09	0.03	0.03	0.06	0.03	0.06	0.03	0.11	0.06	0.06	0.02	0.05	0.05	0.09	0.05			
160	0.05	0.09	0.03	0.03	0.06	0.03	0.06	0.03	0.11	0.06	0.06	0.02	0.05	0.05	0.11	0.06			
165	0.05	0.03	0.03	0.03	0.06	0.03	0.06	0.03	0.11	0.06	0.06	0.03	0.05	0.05	0.11	0.08			
170	0.05	0.03	0.03	0.03	0.06	0.03	0.06	0.03	0.11	0.06	0.06	0.03	0.05	0.05	0.11	0.09			
175	0.05	0.03	0.03	0.03	0.06	0.03	0.06	0.03	0.02	0.06	0.06	0.03	0.05	0.05	0.11	0.09			
180	0.05	0.03	0.03	0.03	0.06	0.08	0.03	0.03	0.02	0.06	0.06	0.11	0.05	0.05	0.12	0.09			

C Range: 0 - 360DEG
C Interval: 22.5DEG
Test Speed: HIGH
Temperature:25.3DEG
Operators:JINZHI
Test Date:2021-07-02

γ Range: 0 - 180DEG
γ Interval: 1.0DEG
Test System:EVERFINE GO-2000A_V1 SYSTEM V2.00.446
Humidity:65.0%
Test Distance:9.660m [K=1.0000]
Remarks: